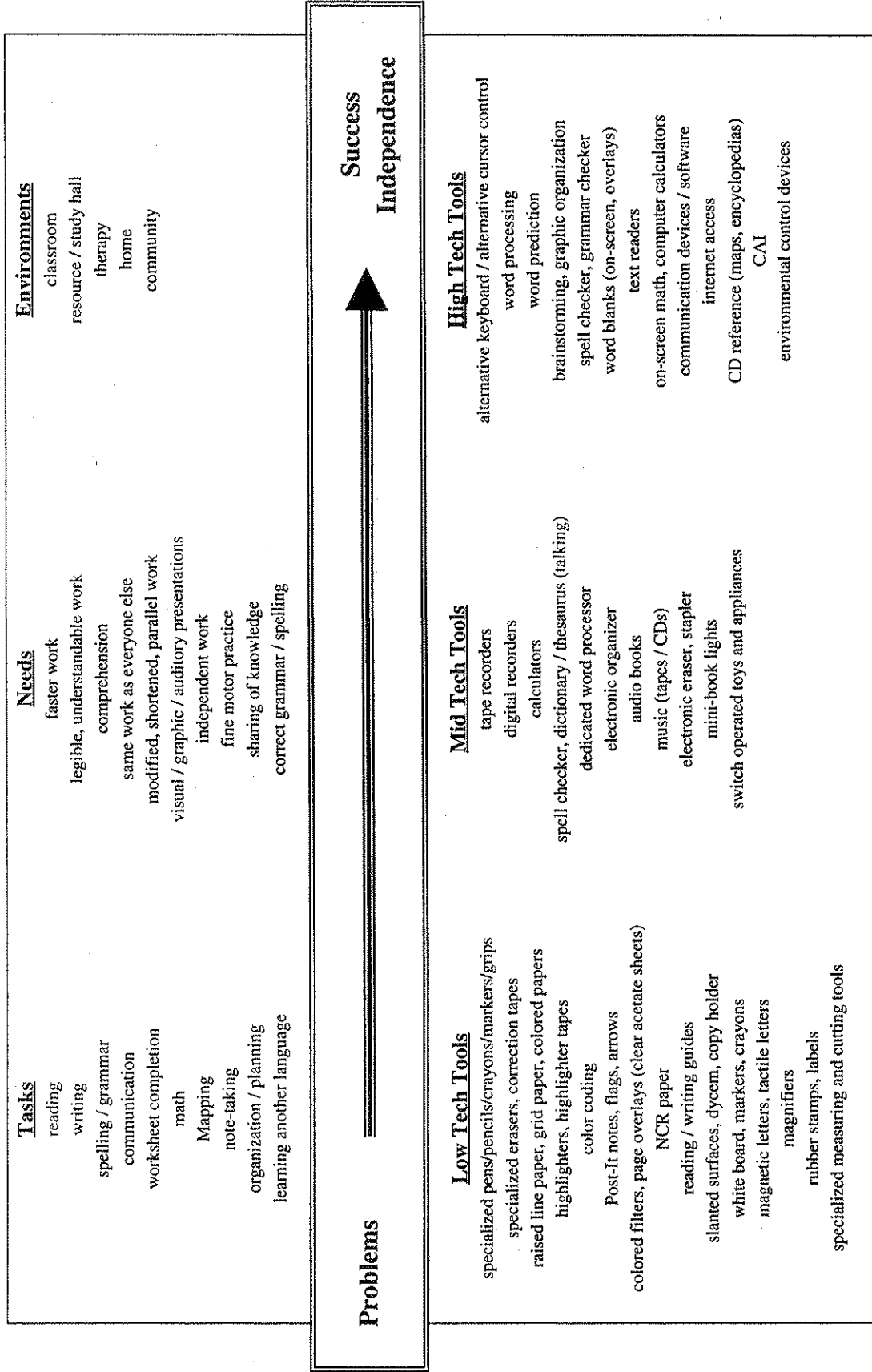


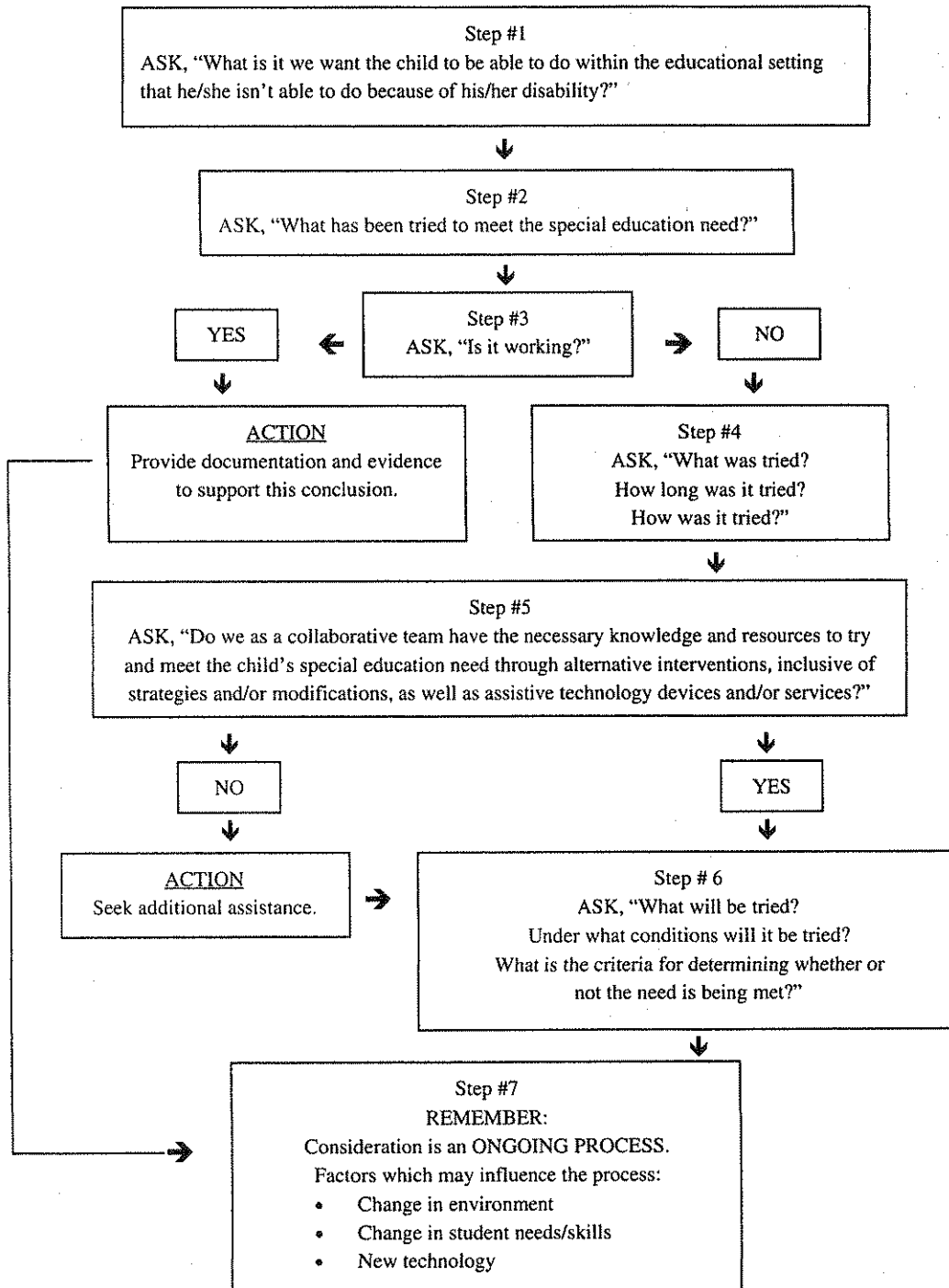
# The Assistive Technology Continuum

Devices to try if a student has problems with



## Addressing Assistive Technology on the IEP\*

### A Flowchart or Primary Questions



\*Adapted from: *Has Technology Been Considered? A guide for IEP teams.* Chambers, A.C., (1997).

In establishing A.T. plan, the following areas should be discussed and recorded on the IEP:

1. Continued A.T. evaluation needs, including selecting and adapting A.T. devices.
2. Funding A.T. device: Who owns it and who maintains and repairs it?
3. Training and technical assistance for LEA and AEA staff, family and student.
4. Coordinating A.T. with other services/therapists/classroom instruction.
5. Designation of a back-up system/device.